



WESTLAKE
MEDICAL
CENTER



MEDICAL SUITES FOR LEASE / 32144 AGOURA ROAD / WESTLAKE VILLAGE / CA





THE PROPERTY

Discover the pinnacle of medical office excellence at Westlake Medical Center, the leading destination in Westlake Village. Boasting a modern design and updated common areas, this center stands as a testament to innovation in healthcare spaces. With on-site pharmacy facilities and thoughtfully designed suites, Westlake Medical Center is the top choice for doctors in the Conejo Valley. Elevate your practice in a space that not only meets but exceeds the expectations of a premier medical office destination. Welcome to a new era of healthcare at Westlake Medical Center.



WESTLAKE
MEDICAL
CENTER

AVAILABILITY

SUITE	SIZE	RATE	STATUS
118	±987 RSF	\$3.95 MG	Vacant
207	±1,034 RSF	\$3.95 MG	Vacant



- Parking 5.00/1,000 SF
- Tenant pays for electricity & janitorial

FEATURES



Class "A" Medical building in the heart of Westlake Village



On-site pharmacy



Free 5/1000 parking



Adjacent to numerous shopping, restaurants, banking, and medical facilities



Elevators located at each entrance

AERIAL OVERVIEW



Townsgate Road

Lakeview Canyon Road

Agoura Road



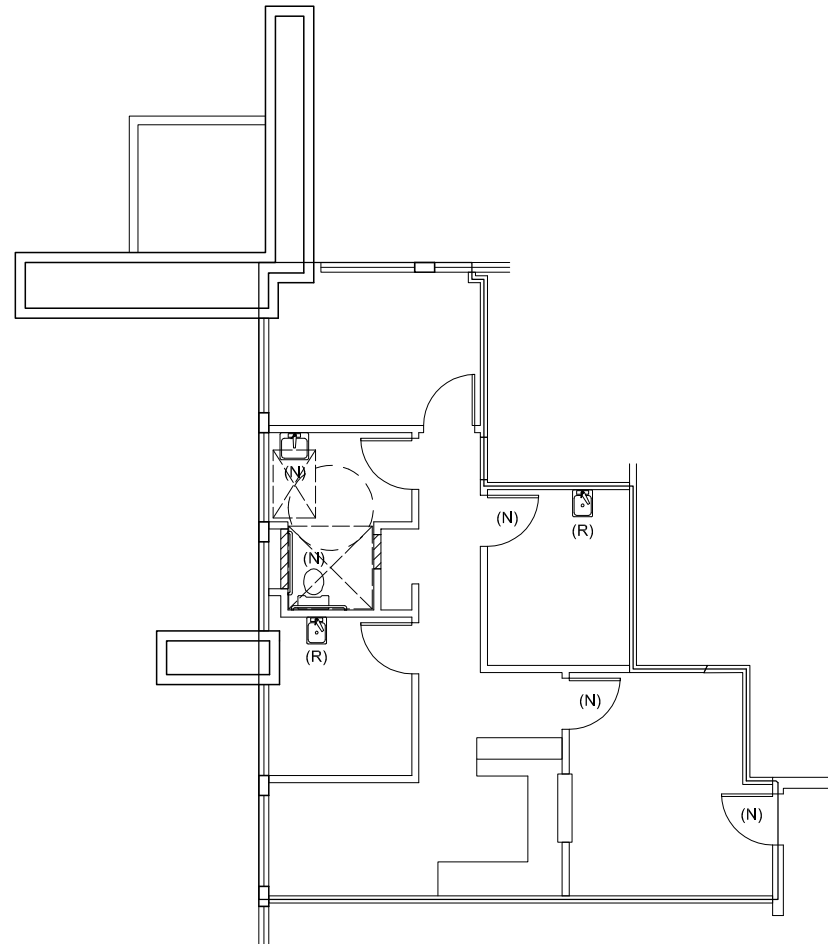


WESTLAKE
MEDICAL
CENTER

AS-BUILT PLAN SUITE 118

±987

Rentable Square Feet



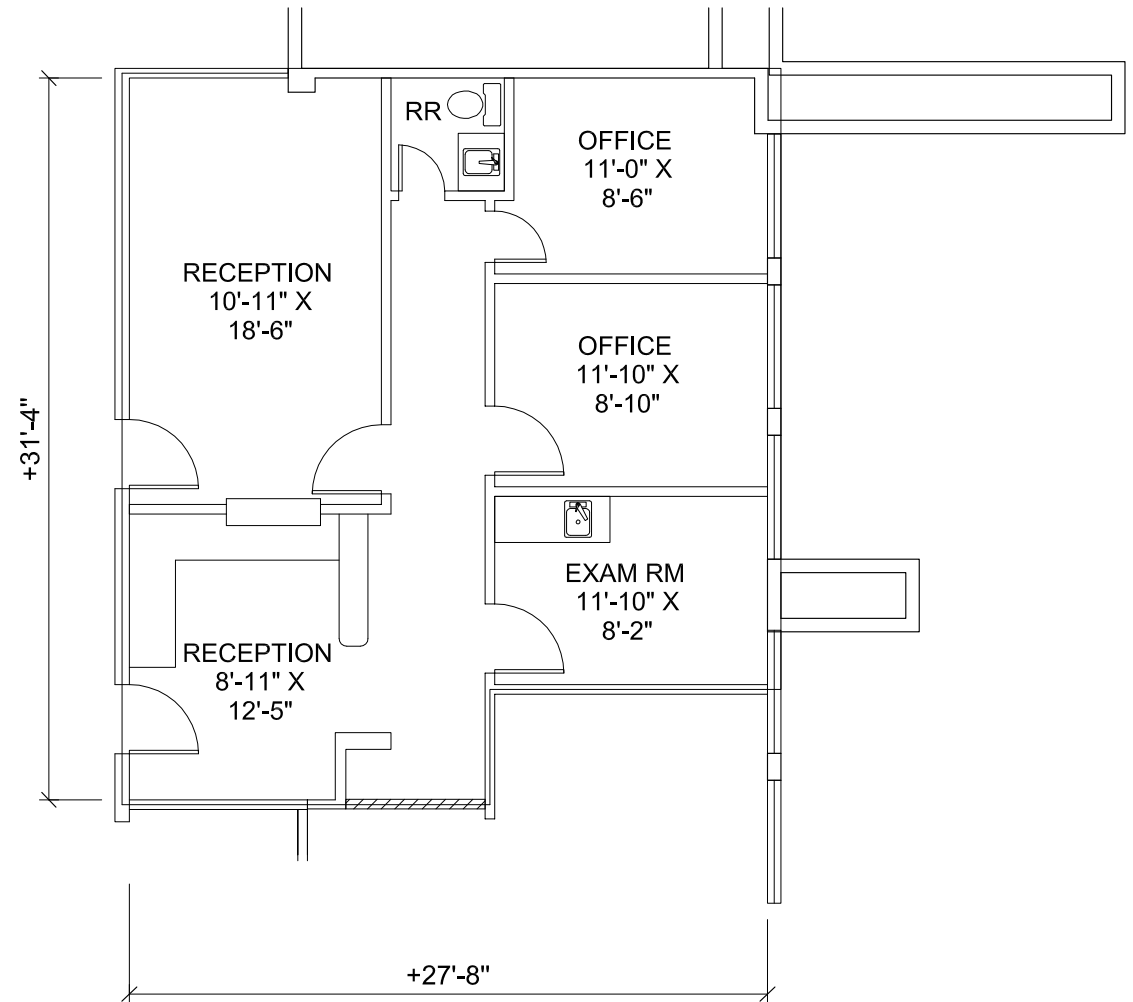


WESTLAKE
MEDICAL
CENTER

AS-BUILT PLAN SUITE 207

±1,034

Rentable Square Feet





**WESTLAKE
MEDICAL
CENTER**

Jeremy Principe

Vice President
DRE #02131156
M (805) 390-5267
T (805) 497-4557
jeremy@westcord.com

Brendan Pagani

Vice President
DRE #02095300
M (949) 887-9814
T (805) 497-4557
brendan@westcord.com



WESTCORD.COM

This information has been furnished from sources which we deem reliable, but for which we assume no liability. The information contained herein is given, in confidence, with the understanding that all negotiations pertaining to this property be handled through the submitting office. All measurements are approximate.

