

VALLE VISTA

FOR SUBLEASE

515 MARIN ST. UNIT 316 THOUSAND OAKS, CA 91360





OVERVIEW

Nestled within the distinguished 515 Marin St. property, Suite 316 stands as an exemplar of exquisite craftsmanship in Thousand Oaks. This exceptional space offers unparalleled panoramic views of the entire Conejo Valley, an irreplaceable feature. The adaptability of the space is noteworthy, as it can be seamlessly scaled down to 6,000 sq. ft. to suit a smaller Tenant's needs.

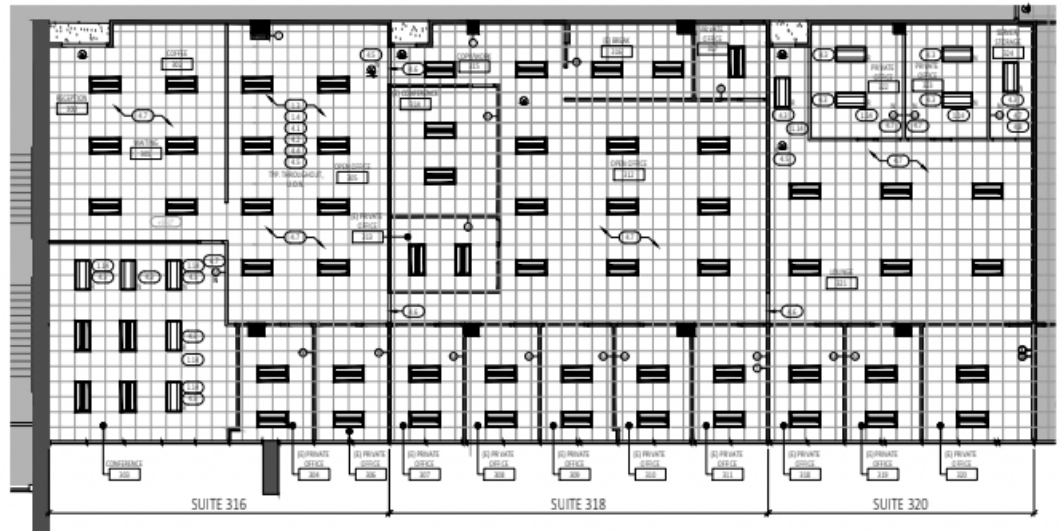
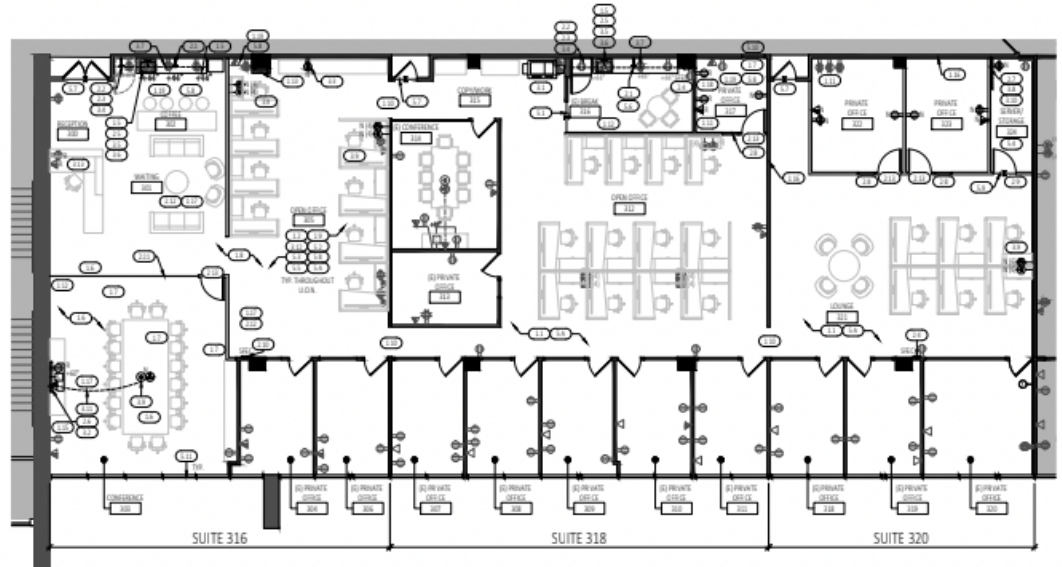
Presenting a turnkey experience, the unit comes furnished with pristine furniture acquired in 2022, which remains mainly unused. Built out in the same year, the space retains its untouched allure. The suite encompasses two well-appointed kitchens, a welcoming reception area, a spacious executive conference room, an additional interior meeting space, 10 private offices enveloped in natural light, courtesy of their oversized windows, alongside 3 interior offices. Moreover, the expansive bullpen area is plug & play with pre-fitted with high-end cubicles.

SIZE	Approx. 8,425 RSF (Demisable to around 6,000 RSF)
PRICE	Contact Broker
SUBLEASE TERM	Until November 2027
LAYOUT	13 Private Offices, 3 Bullpen Areas, Two Conference Rooms, Two Kitchenettes, Receptio Area, Two Entrances.
ELEVATOR	Yes
PARKING RATIO	4/1000 (Covered and Surface)
SIGNAGE	Electronic Directory and Door Signage.
OTHER	Class A, Plug and Play space with some of the best views in the Conejo Valley. Extremely efficient and functional space. Space is already cabled and ready to go for a new Tenant.



SPACE DETAILS

FLOOR PLAN



GALLERY



VALLE VISTA

Listed By

Jeremy Principe

Vice President, Office Properties

DRE #02131156

M (805) 390-5267

T (805) 497-4557

Jeremy@westcord.com

Brendan Pagani

Vice President, Office Properties

DRE #02095300

M (949) 887-9814

T (805) 497-4557

Brendan@westcord.com



WESTCORD.COM

This information has been furnished from sources which we deem reliable, but for which we assume no liability. The information contained herein is given, in confidence, with the understanding that all negotiations pertaining to this property be handled through the submitting office. All measurements are approximate.

