

# YCC

YOUNAN CORPORATE CENTER

555 ST CHARLES DR / THOUSAND OAKS / CA 91360

**FOR LEASE**



**WESTCORD**



# PROPERTY HIGHLIGHTS



**UPGRADED  
COMMON AREAS**  
and professional  
management



**360° VIEWS**  
of the Santa  
Monica Mountains



**QUAINT  
COURTYARD**  
with break areas



**ABUNDANT  
PARKING**  
3.50/1,000 RSF



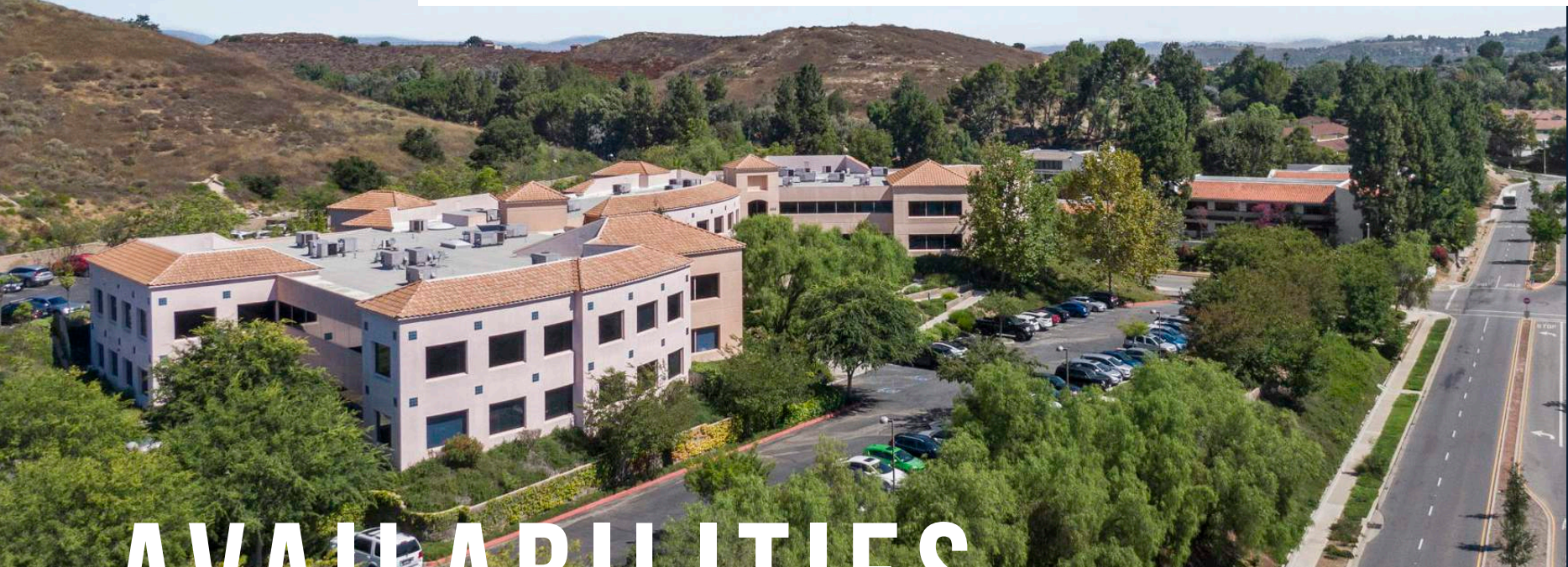
**EASY ACCESS**  
to i-101 Freeway



**CLOSE PROXIMITY**  
to nearby amenities  
including Janss  
Markeplace and  
The Oaks Mall

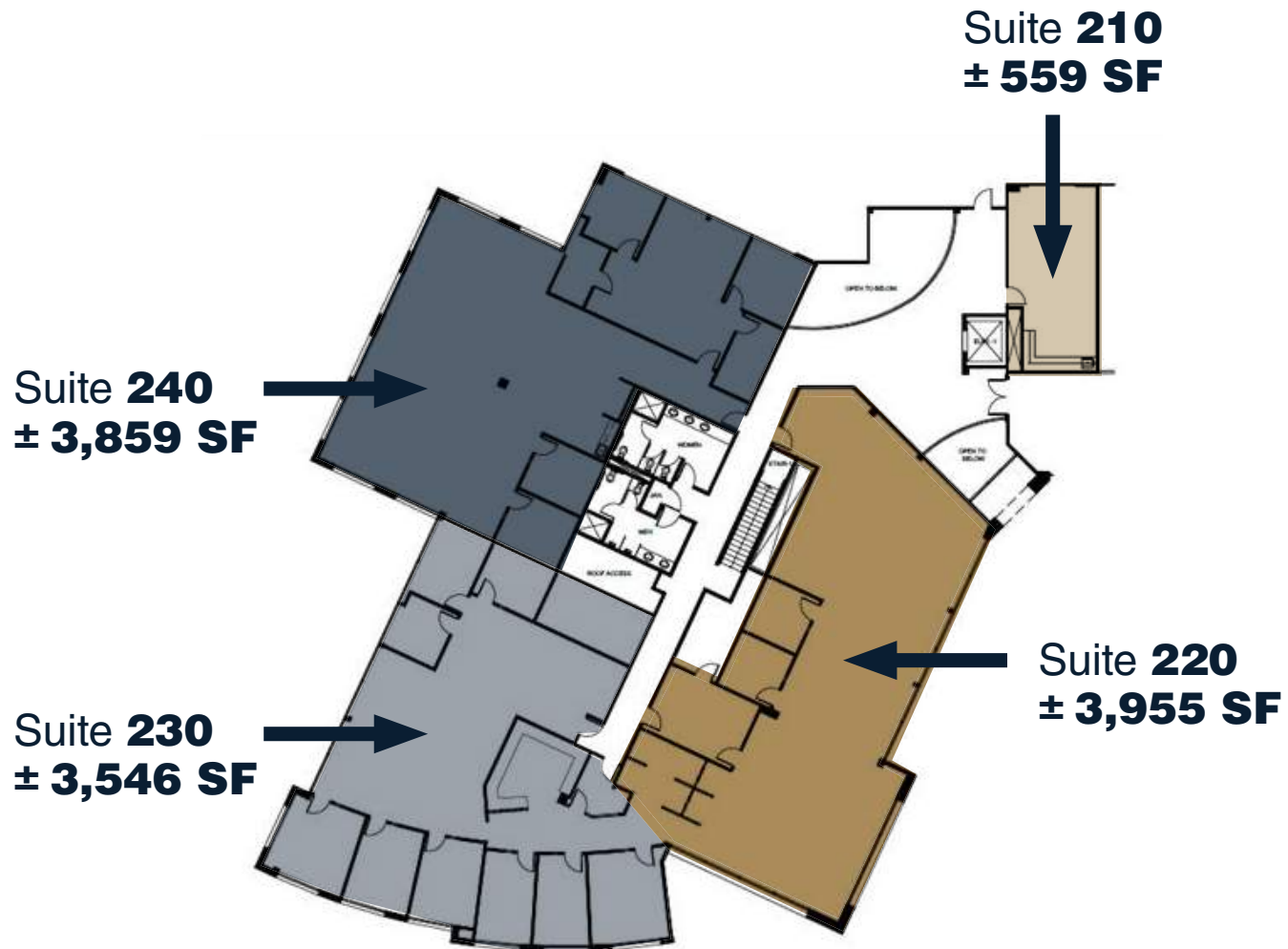


SUITE	SQUARE FEET	ASKING RATE	OCCUPANCY	NOTES
103	± 2,344 RSF	\$2.15 FSG	Vacant	
210	± 559 RSF	\$2.15 FSG	Vacant	Open bullpen, kitchenette
220	± 3,955 RSF	\$2.15 FSG	Vacant	Contiguous up to 11,360 RSF
230	± 3,546 RSF	\$2.15 FSG	Vacant	Contiguous up to 11,360 RSF
240	± 3,859 RSF	\$2.15 FSG	Vacant	Contiguous up to 11,360 RSF

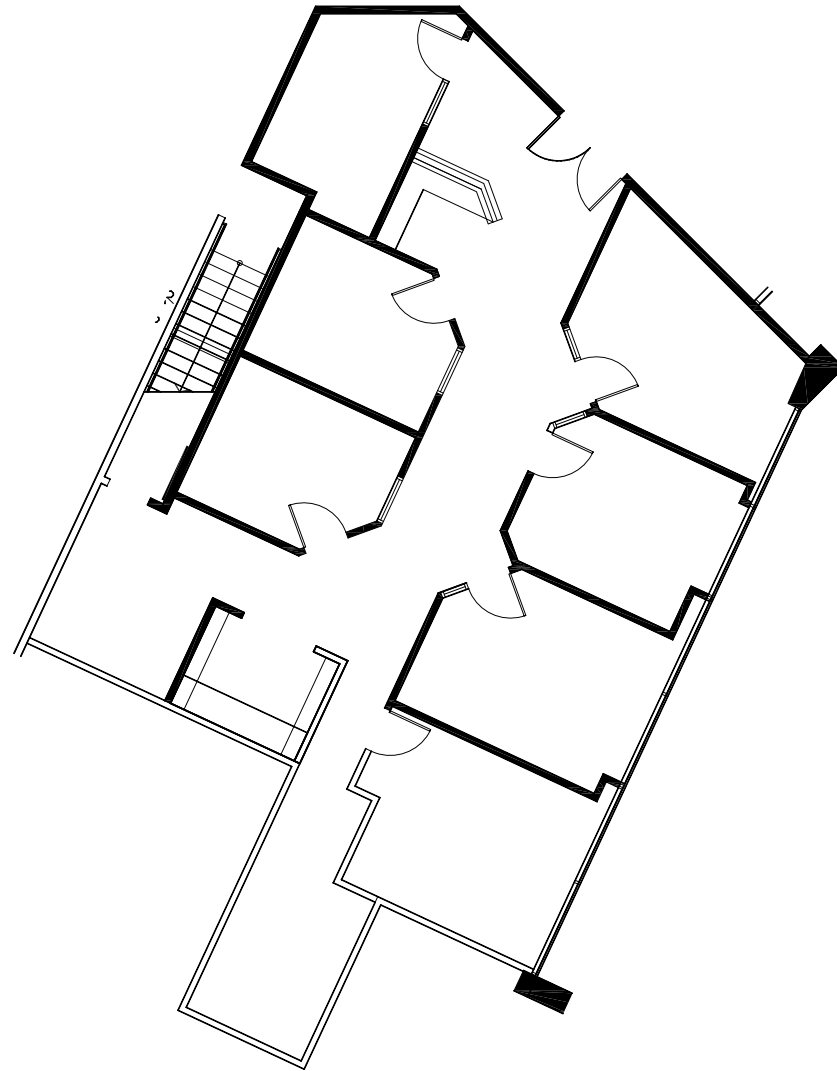


# AVAILABILITIES

# FLOORPLANS



# FLOORPLANS



Suite **103**  
± **2,344 SF**





### The Oaks

### Los Robles Golf Course

- Macy's
- JC Penny
- H&M
- Michael Kors
- Nordstrom
- Anthropologie
- The Cheesecake Factory
- Panda Express
- Starbucks
- Olive Garden
- Chipotle
- Seey's Candies

101 Freeway

### Janns Marketplace

- Aldi
- Golds Gym
- Nordstrom Rack
- Petco
- Ulta Beauty
- Old Navy
- Bucca Di Beppo
- Starbucks
- California Fish Grill
- Crazy King Kong Sushi
- Panera Bread
- Jan Chi Korean BBQ

# YCC

YOUNAN CORPORATE CENTER

W Wilbur Rd

St Charles Dr

# AERIAL OVERVIEW







# YCC

YOUNAN CORPORATE CENTER

## Listed By

### Jeremy Principe

Vice President, Office Properties

DRE #02131156

M (805) 390-5267

T (805) 497-4557

Jeremy@westcord.com

### Brendan Pagani

Vice President, Office Properties

DRE #02095300

M (949) 887-9814

T (805) 497-4557

Brendan@westcord.com



WESTCORD.COM

This information has been furnished from sources which we deem reliable, but for which we assume no liability. The information contained herein is given, in confidence, with the understanding that all negotiations pertaining to this property be handled through the submitting office. All measurements are approximate.

